



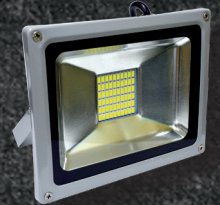
K&K Systems, inc.
Traffic Safety Products Manufacturer

FEATURES

- ▶ IR sensors for passive pedestrian activation
- ▶ FHWA Interim Approval 21
- ▶ ADA Compliant
- ▶ Heavy duty, weatherproof, corrosion resistant construction
- ▶ Automatic light output for maximum efficiency
- ▶ Super bright LEDs for visibility day and night
- ▶ Ultra slim compact design
- ▶ Bi-directional to increase pedestrian visibility
- ▶ Solar powered

NIGHT VISION CROSSWALK BEACON SYSTEM MODEL 132-D12

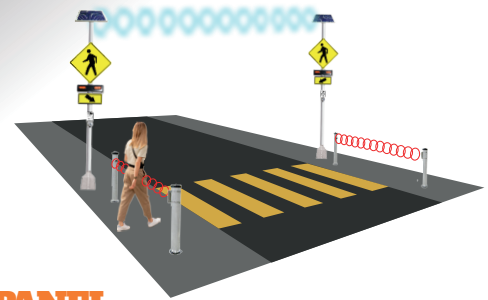
The K&K Night Vision Crosswalk System puts the spotlight on pedestrians quite literally. The Night Vision System combines our Touch-Free Crosswalk System with ultra bright LED Flood Lighting. Like the Touch-Free system, the Night Vision System is triggered with IR sensors for passive pedestrian activation. Pedestrians pass between the Bollards breaking the IR beam which activates the all of system's lighting. Our Touch-Free Bollards not only trigger the system, but also prevent the spread of disease.



The Flood Light is a 30W fixture with a high powered LED chip that features no glare, strong and evenly directed lighting to illuminate pedestrians as well as provide a lighted pathway.



NIGHT VISION CROSSWALK BEACON SYSTEM MODEL 132-D12



SOLAR PANEL

K&K utilizes the most up-to-date solar and electronics to maintain power levels through rain, shine, sleet, or snow.

FLOOD LIGHT

- No glare, strong directivity, high evenness.
- High power LED chip integrated package 30W.
- Corrosion and weather resistant reflector surface.
- High pressure die cast aluminum housing is compact and corrosion resistance.
- Waterproof and dust-proof housing has a silicon rubber sealing that is heat resistant for longevity.

SIGNAL HEAD HOUSING

Size: 12"

Material: Polycarbonate or aluminum

Color: Black or Yellow

Visor: 360 degree Cap

Quantity: 2

Mounting: Split, Stacked, or Side by Side

LED SIGNAL

Color: Amber

Seal: Weather resistant

LED Bulbs: 2 - Meets ITE Standards

CONTROL CABINET/BATTERY

Construction: Aluminum

Mount: On pole

Seal: Weather Resistant

Access: Side-Hinged

Lockable: Twist Lock or Slam Lock

Design: Clean and Simple for Easy Maintenance

Battery: 12 volt Sealed. Available locally.

CROSSTALK-CROSSWALK CONTROLLER

The CrossTalk located inside the control box is an advanced, solar-powered controller. It utilizes short-range wireless connectivity. The CrossTalk is setup quickly and provides more functionality and flexibility than traditional "wired" systems.

PUSH BUTTON ASSEMBLY

Button: 2" with momentary switch rated at 36VDC

Button Fixture: 5" x 7" with crossing sign inserted

- Push Button upgrades available



*Shown with
optional
signage and
Round Aluminum
Crash Tested Pole*