



K&K Systems, inc.
Traffic Safety Products Manufacturer



MINI MESSENGER OPERATING MANUAL



TABLE OF CONTENTS

Thank You Letter..... 1

Quick Start Guide.....2

Programming a Message.....3-4

View a Message on the PC4

Delete a Message.....4

Edit a Previously Saved Message4

General Description of Software Features.....5

Troubleshooting..... 6



Thank you for your business!

To Our Valued Customer,

K&K Systems, Inc. is excited that you have purchased our product.

Our company has been serving the traffic industry since 1997. Since that time we have risen to become a leader in the traffic industry. We offer a complete line of traffic safety products that include message boards, arrow boards, radar speed monitors, solar school zone flashers, solar 24-hour flashers and many other quality products that serve our industry today.

At K&K Systems, Inc., we strive to improve the quality of our products. We are dedicated to the concept that our customers are our most valuable resource. We strive to serve our customers as we would want to be served.

Tim Keith,
President





MESSAGE DISPLAY QUICK START GUIDE

CONTROLLER



Power Button
Hold button until device beeps to power controller on or off.

ON/OFF Button
Push button to turn LED Sign On or Off. An X will appear at the top left of the LCD Screen when the sign is off, and a check mark will appear when the sign is on.

UP/DOWN Keys
Use these buttons to navigate through the programmed messages.

Enter Button
Use this button to select a message and send it to the sign.

INSTRUCTIONS

1. Hold **"Power"** button until the LCD Screen on the controller comes on.
2. Search through the pre-programmed messages using the **"UP/DOWN"** Keys on the controller.
3. Press **"ENTER"** to select the desired message and send it to the message board. The controller will display **"Send OK"** if the message was successfully sent.

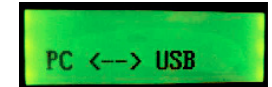
***If the controller does not say "Send OK", check to make sure the mini messenger board is turned on.*



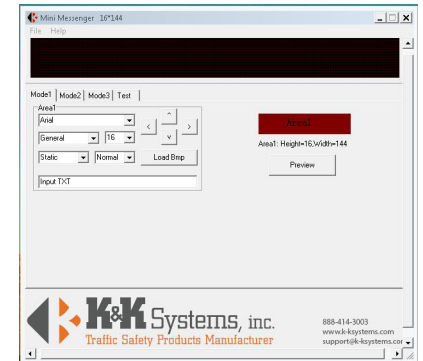
PROGRAMMING A MESSAGE

INSTRUCTIONS

1. Make sure the controller is ON and connect the USB cord to the controller and your PC.
2. Hold the **"Power"** button until the LCD Screen on the controller comes on. *(You should see this screen)*
3. If the software does not open automatically, open **"my computer"** click on **"K&K SIGN"**, and open the sign software.



4. Open the software and click **"Run"**.
5. You should see this screen
6. Pull down the **"File"** menu and click **"New"**
7. A window with previously saved messages should appear for you to save your new message. *** If the correct window does not appear:* Click on **"my computer"** and click on **"K&K SIGN"**
8. Name your new message the next available double digit number.



(Example: if the last number listed is 09.led, your new message will be saved as 10.led.)

Make sure not to duplicate numbers - this will cause neither message to display.

Also be sure to name your message two digits: *(ex. 01.led, 05.led, 10.led, 19.led, etc.)*

9. Click **"Save"**
10. A screen will appear that says **"File save ok"**. Click **"Okay"**.
11. Type your message in the text box labeled **"Input TXT"**. (Delete the text **"Input TXT"** first)
12. Select what font, size, effect, speed you would like your message to display.
13. Press Preview and click in the display area.
***NOTE: Your message will not preview until you click in the display area where you message is shown.*
14. Once your message is complete, pull down the **"File"** menu and click **"Save"**.
15. Disconnect the controller from the PC, and find the new message using the arrow keys on the controller.
16. Click **"ENTER"**



PROGRAMMING A MESSAGE CONTINUED

TO VIEW A MESSAGE ON THE PC:

1. Be sure the controller is ON and is connected to the PC.
2. Run the Software
3. Pull down the "File" menu, click open. A window with previously saved messages should appear. *** If the correct window does not appear: Click on "my computer" and click on "K&K SIGN"*
4. Choose the message you want to view.
5. Click "Open".
6. Click the display area, and the preview will run.

TO DELETE A MESSAGE:

1. Be sure the controller is ON and is connected to the PC.
2. Run the Software
3. Pull down the "File" menu and click "Open".
4. Click on "Computer" and scroll down until you find "KK Sign" under the list of devices.
5. Double click on "KK Sign"
6. Right click on the message you wish to delete, and select "Delete" from the menu.
7. Click "Yes" to confirm deletion.
8. Click "Cancel".

TO EDIT A PREVIOUSLY SAVED MESSAGE:

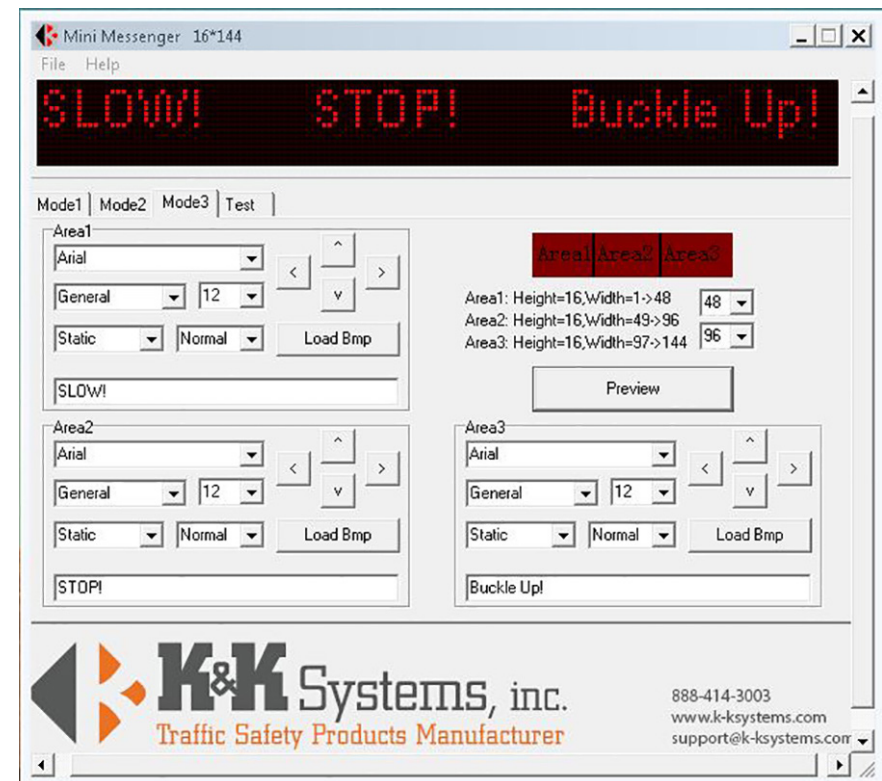
1. Follow steps 1-5 from above.
2. Double click with the left mouse button or select the message, and click "Open".
3. Now follow steps 11-16 from page 3 under **PROGRAMMING A MESSAGE**.

** Be sure to "Save" changes to the message before you disconnect the controller or exit the screen.*



GENERAL DESCRIPTION OF FEATURES

- MODE 1:** Lets you display one message with one effect.
- MODE 2:** Splits the LED Sign into two sections and lets you display two messages at the same time with different effects.
- MODE 3:** Splits the LED Sign into three sections and lets you display three messages at the same time with different effects.
- TEST:** For K&K Systems' use. You will not use this feature.
- ARROW KEYS:** Use to center text in the display area. You can move the text left, right, up, or down.





TROUBLESHOOTING

If you experience connection difficulties, try to re-sync your controller to your sign. Follow the instructions below. ***Please call 888-414-3003 if you experience any difficulties.*

STEP 1:

Locate the “Power” button located on the faceplate and the “Sync” button located on the back.



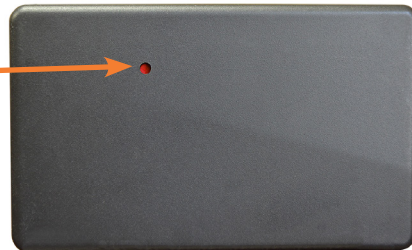
STEP 2:

Press and hold the “Power” button until the controller beeps and turns on.



STEP 3:

Use a pen to press and hold the “Sync” button for about 1 second and release.



STEP 4:

Choose any message on the controller and press the “Enter” button on the faceplate. The LCD Screen on the controller will display “Send OK”.





K&K Systems, inc.
Traffic Safety Products Manufacturer

687 Palmetto Rd.
Tupelo, Mississippi 38801

office: 662.566.2025
fax :662.566.7123
toll-free: 888.414.3003

email: sales@k-systems.com
www.k-systems.com