




**K&K Systems, inc.**  
Traffic Safety Products Manufacturer

**SCHOOL ZONE  
SYSTEMS**





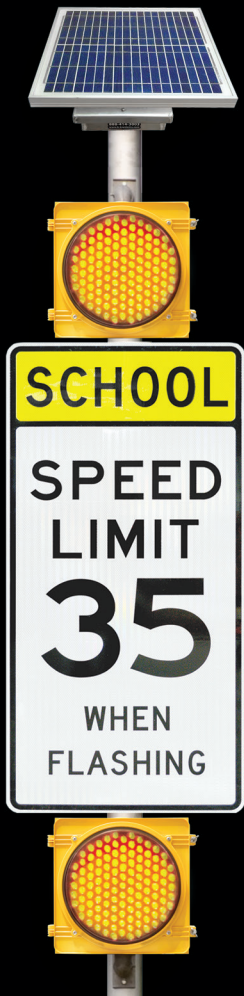
**Building the most advanced  
and reliable school zone  
safety products that make  
installation and management  
simple isn't a job --  
it's our mission.**

According to the National Highway Safety Administration (NHTSA), accidents involving pedestrians occur around the hours when students are traveling to and from school. With about 82 million grade school students and over 18 million college students enrolled in U.S. schools, every city and school must make providing safe school routes a priority. Traffic in and around schools can be heavy and drivers often don't notice the lower speed limits or cross walks. For this reason, K&K Systems' provides traffic safety systems that alert drivers and bring attention to school zones. In addition, our school sign systems have been tested and meet federal requirements in many areas.

- ▶ Meets the Safe Routes to School (SRTS) infrastructure funding models.
- ▶ NCHRP 350 Crash Tested and Accepted
- ▶ Meet ITE & MUTCD requirements
- ▶ NEMA T2 Tested and Approved.

K&K Systems, Inc. has been serving the traffic industry since 1997. Since that time we have become a leader in the traffic safety industry. K&K Systems offers a complete line of traffic safety products that include solar beacons, solar school zone flashers, solar 24-hour stop beacons, solar 24-hour warning flashers, radar speed monitors, variable message boards, arrow boards, and many other quality products that serve the traffic safety industry.

Should K&K not have a system that meets your needs, we will custom design a system to meet your specifications.



## SCHOOL ZONE SYSTEMS

LED Beacons or LED Inserts.  
Products for Ultra-Bright Solutions.

K&K Systems provides ultra-bright, solar powered solutions to alert drivers in school zones. We realize that school zone signs have a lot of competition to be seen in the multitude of signs, banners, and other things along our roads. For this reason, we utilize ultra-bright LED technology which have low power consumption and longevity in both our traditional beacon systems and our innovative, cost saving sign alert systems.

◀ Traditional Beacons

Sign Alert with LED Inserts ▶



## CONTROL SYSTEMS



**7-Day Timer** We utilize the economical 7-Day Timer in our Eco Systems for greater cost savings. Similar to the 365-Day Timer, the 7-Day Timer module allows you to set the days and times of day that sign beacons are activated, but only on a week long basis. Our Eco Beacons are designed with the control box located under the solar panel at the top of the sign pole. Drop down control box available.



**365-Day Timer** The K&K Systems School Zone standard sign system is equipped with a 365-Day Programmable Timer module that allows you to set the days and times of day that beacons are activated on your signs. The time is located in a drop down control box on each sign for manual control. The advantages of the 365-Day Timer is that regular days and holidays alike can be programmed for the a complete year.



**CrossLink** CrossLink is a USB-connected device that works in combination with K&K Systems' CrossTalk to control and program alert signs directly from your computer using K&K Systems' software. CrossLink allows an entire school year to be programmed easily and quickly.



**CrossTalk** The CrossTalk is an Advanced, Solar-Powered Lighting Controller. It is designed for school zone safety systems, cross-walk / pedestrian systems, speed/radar systems and more. Utilizing solar power with both cellular and short-range wireless connectivity, CrossTalk applications can be setup quickly and provide more functionality and flexibility than traditional "wired" systems.

*See the CrossTalk section in this brochure for more information.*

# CROSSWALK SYSTEMS

Efficient. Bright. Wireless.

We understand that pedestrians trust their safety to street crossing signs. That's why we take the utmost care to use only high-intensity LEDs in our traditional beacons, sign alerts, and RRFBs (Rectangular Rapid Flashing Beacon) which are exceptionally noticeable by drivers day and night. Our solar panels are the most up-to-date technology with electronics to maintain power levels through rain, shine, sleet, or snow. LEDs have a long life expectancy and consume less energy than conventional bulbs. Our 12" high solar flashing beacons enhance the visibility of pedestrian crosswalks.

**Push Button** activation puts safety at the pedestrians' fingertips. It wirelessly activates the beacons via the CrossTalk Controller to flash for a preprogrammed amount of time. Learn more about the advantages of the CrossTalk CrossWalk below.

The **RRFB** has proven to increase safety and yield rates at uncontrolled crosswalks. Their amber color and quick flash pattern make them easily visible in difficult night-time lighting conditions such as headlight glare and wet roads. According to a study by the National Highway Traffic Safety Administration, RRFBs were found to increase the effectiveness in causing drivers to yield to pedestrians from 0-26% to 72-96%.



## CrossTalk CrossWalk **CONTROL SYSTEM**



The CrossTalk CrossWalk is an efficient and cost saving solution to crosswalk sign alert function. The CrossTalk CrossWalk Controller is designed for pedestrian crossings with signs on both sides of the street. It allows communication between the signs wirelessly, as opposed to traditional wired systems that requires boring under the street and running the wire to pair crosswalk signs. The CrossTalk CrossWalk uses a radio frequency to activate both signs for the set amount of time when a pedestrian simply presses the **Push Button**.



Setting the amount of time that the LEDs will flash on the CrossTalk CrossWalk is a snap. Simply turn the timing dials to the desired amount of time in seconds, minutes, or hours and set the scale, which is a multiplier, and you're set. For example, to set the sign alert LEDs to flash for 30 seconds, turn the "TIME" dial to the "30" on the SEC (seconds) side and set the "SCALE" dial to "1". It's just that easy.

Contact us for information about other time and cost saving traffic safety solutions.



# CrossTalk™

## An Intelligent Controller to Simplify Safety

The CrossTalk is a rugged, integrated, compact, all-in-one advanced, solar powered lighting controller, flasher, auto-dimmer and scheduler. On-board cellular technology provides a secure cloud server connection offering real-time access from virtually anywhere.



**Control from Anywhere** CrossTalk units can be accessed and configured with a desktop computer, laptop computer, or any smart mobile device with cellular service to control a single sign or multiple signs in multiple locations using K&K Systems, Inc. CrossTalk web-based, cloud interface.

**One Device with Many Applications** Designed for multiple applications, CrossTalk controllers are used for a variety of traffic & safety applications including school zone safety systems, bridge navigation beacons, cross walks, speed/radar systems and more.

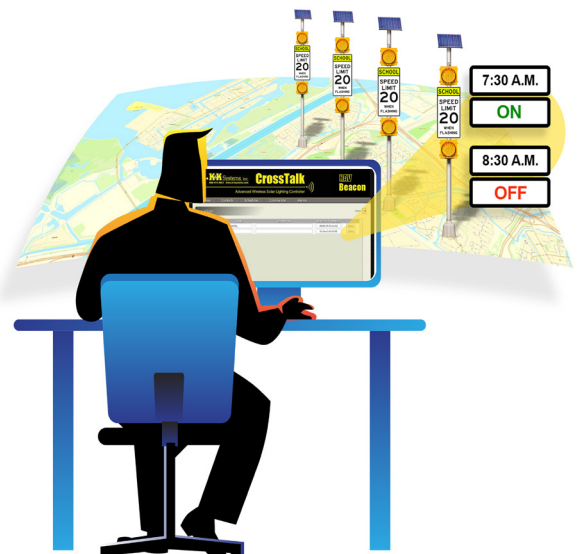
**More Flexibility and Functionality** Solar power provides more functionality and flexibility than traditional “wired” systems. CrossTalk applications can be setup quickly utilizing both cellular and short-range wireless connectivity to control multiple nodes across an entire campus for scheduling, status monitoring, diagnostics, and real-time control.

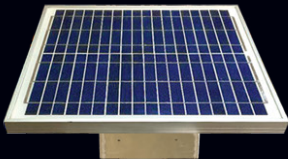
- ▶ Compact all-in-one unit
- ▶ Solar powered
- ▶ Control 24/7/365 with web-based interface
- ▶ Control a single beacon or multiple beacons in multiple locations
- ▶ Access via computer, smartphone or tablet automatically
- ▶ Sends notifications via email and/or text message for:
  - low battery
  - sign orientation
  - beacon failure
- ▶ Standard maintenance-free sealed battery
- ▶ Clean designed control box
- ▶ Easy maintenance

## CONTROL, MONITOR, AND MANAGE

Whether your system is one or one hundred signs.

K&K's cloud-based CrossTalk software allows you to remotely connect to your CrossTalks school zone sign alerts from almost anywhere. Check on system status, change system settings, and monitor vital data such as battery & solar voltage, input/output status, and GPS location (if GPS equipped) as well as collect other system data for future analysis from the comfort of your office or on the go. While independent control of each CrossTalk is always available, CrossTalks can be grouped which allows you to set the functions for multiple signs without having to program individual units.





# SCHOOL ZONE SYSTEMS RETROFIT SYSTEMS



## UPGRADE TO STRETCH YOUR BUDGET

K&K Systems' School Zone Safety System replaces outdated, inefficient, technology with a system that is not only cost efficient, but also saves time, labor, and maintenance costs. Our standard system uses the 365-Day Timer that is set manually. For simplistic safety beacon control and benefits throughout the entire district upgrade to the **CrossTalk** solar powered integrated, compact all-in-one controller, flasher, auto-dimmer and scheduler.

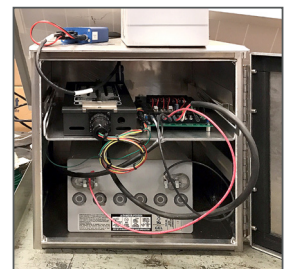
## BENEFITS

- ▶ **Save Basic Component Costs** - The CrossTalk easily adapts to any system without having to replace components such as signs, beacons, control boxes or posts.
- ▶ **Save Time** - Use the CrossTalk to program one or multiple signs in multiple locations from virtually anywhere at any time with any device that has internet access (desktop computer, laptop, tablet or smartphone).
- ▶ **Worry-Free** - Set the schedule for a complete year including holidays and special events and forget it with the CrossTalk. In special cases such as emergencies, your system's schedule can easily and quickly be changed.
- ▶ **Save Money** - Solar power and wireless connectivity means no monthly electric bill.
- ▶ **Save Labor** - Wireless connectivity means never having to bore under roads, wiring, or wiring maintenance.
- ▶ **Save Maintenance Costs** - The CrossTalk's self monitoring feature sends alerts to the managing technician via email and/or text for low battery, sign orientation, and beacon failure. With only two components (CrossTalk and battery) maintenance and repairs are simple. We use a standard, maintenance-free, sealed battery that can be purchased locally.

*Should K&K not have a system that meets your needs, we will custom design a system to meet your specifications*



*Clean designed control box means simple repairs*



*Competitor's control box.*